

REBECK ENTERPRISE CO., LTD.

SPECIFIED REQUIREMENTS

ITEM : P35001335292452

1. Stand Operating Conditions

- (1)Rated Voltage: 24VDC
- (2)No load Speed of motor/with gear box: 5200/400 (Ratio: 13)
- (3)No load Current: 0.32A
- (4)Operating Voltage Range: 18-24VDC
- (5)Rated load: 5.2 Kg-cm
- (6)Movable Temperature Range: -20°C~+110°C
- (7)Storage Temperature: -30°C~+70°C

2. Electrical Characteristics:

- (1)Rated-load Current: 0.8A
- (2)Rated-load Speed: 400 RPM
- (3)Stall Torque: 8 kg.cm
- (4)Diameter: *37/34.5mm.
- (5) Length: Motor 29 + gear box 42 mm
- (6)Output shaft Rotation: CCW&CW
- (7)Switch Requirements: None
- (8)EMI filter requirements: None

3. Measuring Conditions

- (1)Motor position: To be held with shaft horizontally
- (2)Power Source: Regulated: DC power supply which assures unquestionable measurement

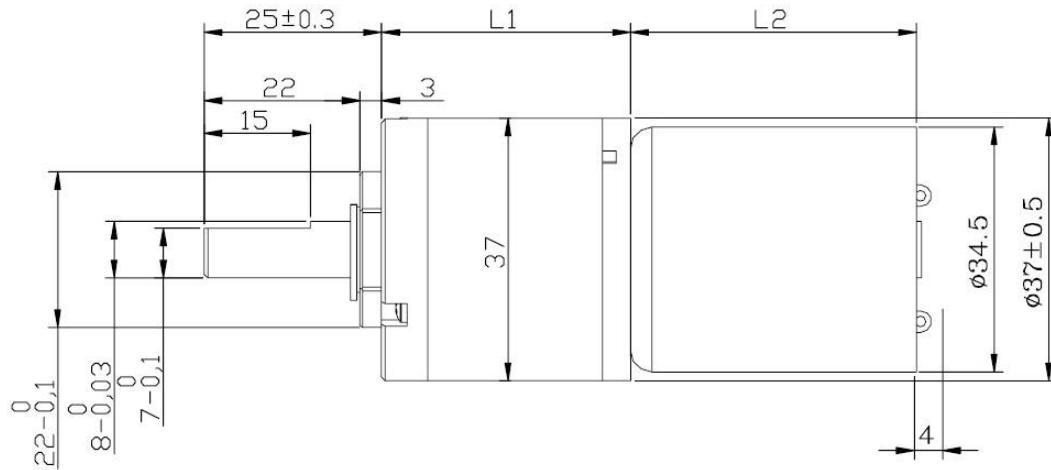
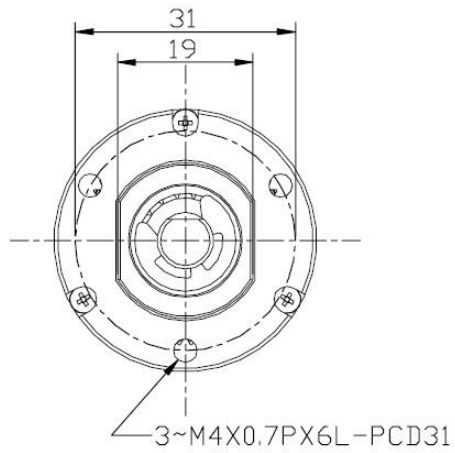
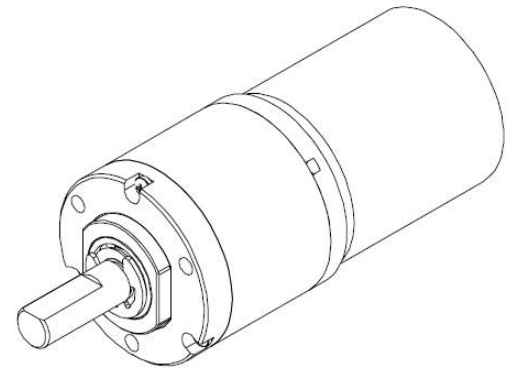
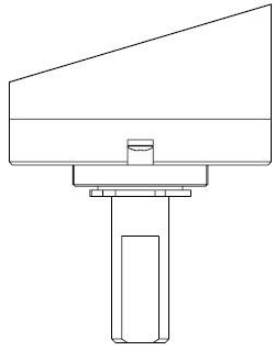
4. Warranty:

constant cycle 5,000hrs.

Assembly is RoHS compliance.

減速比	L1	L2
1/3-1/6	21.2	25
1/10-1/43	28	
1/50-1/172	35	29
1/134-1/1135	42	40

零件名稱		材質及CODE	整理號碼	備註
齒輪馬達		*		防銹處理
更改	1			
記事	2			



SUZE technolog Co., Ltd.

鈺湖實業有限公司

校核		設計	Wing	比例	1:1	圖號	P35-B-3540
審定		繪圖	Wing	單位	M/M		
		日期	05/29/2018				